

# FISHING REPORT NUMBER 20

## 9/6/2012



**YOU CAN FIND US DIRECTLY ON FACEBOOK.** This page features a variety of information on fishing, hunting, and wildlife watching in Connecticut. The address is [www.facebook.com/CTFishandWildlife](http://www.facebook.com/CTFishandWildlife).

### INLAND REPORT

**LARGEMOUTH BASS** fishing is generally reported as good. Areas to try include Bantam Lake, Wononskopomuc Lake, Hatch Pond, Gardner Lake (slow), Pachaug Pond (slow), Highland Lake, Mashapaug Lake, Congamond Lakes, Mansfield Hollow Reservoir (at dusk), Bunnells Pond, Winchester Lake, Stillwater Lake, Halls Pond, Silver Lake (Meriden), Candlewood Lake, Lake Hayward, Lake Housatonic, Dog Pond, Bishop Swamp and Roseland Lake. **Tournament reports** are from Mansfield Hollow Reservoir (fair, mostly 1 lb fish, but a 4.9 lb lunker) and Lake Zoar (had to work for them here).



**SMALLMOUTH BASS** action reported at Highland Lake, Lake Zoar, Coventry Lake, Colebrook Reservoir (water very low, use care launching), Candlewood Lake and the upper Housatonic River.

**NORTHERN PIKE** catches have been reported from Bantam Lake (slow rolling big spinner bait) and Winchester Lake.

**CHAIN PICKEREL** continue to be caught at Wononskopomuc Lake.

**PANFISH** are providing excellent late summer time action throughout the state. Use worms, grubs, jigs or small poppers for them. Small local ponds are often great places, for bigger waters, try Lower Moodus Reservoir, Batterson Park Pond, Red Cedar Lake, Bishop Pond, Rogers Lake, Mono Pond, Griggs Pond, Uncas Pond, Dog Pond, Hatch Pond, Leonard Pond, Gardner Lake and Tyler Lake.

**Connecticut River** – Flows have increased to more typical levels. Some slow **STRIPED BASS** action can be found in the lower river. **NORTHERN PIKE** fishing has been fair to good in the coves, the mouth of Salmon River and in the main stem downstream from Hartford to Harbor Park and in Haddam near Haddam Meadows.

**LARGEMOUTH BASS** are being taken in the coves. Some **SMALLMOUTH BASS** action reported in the Enfield area and in the Hartford to Middletown area. **CARP** are being caught on corn & dough balls. **CATFISH** are providing great late summer action on cut bait (chunking) in brush piles near the deeper holes. Try the East Hartford to Portland stretch. **BLACK CRAPPIE** fishing is reported as good on small shiners in the back coves (Wethersfield area).

#### **IMPORTANT REMINDER TO ANGLERS AND BOATERS-**



**Zebra mussels were recently (October, 2010) found in Lake Zoar and Lake Lillinonah.**

Prior to this discovery, zebra mussels had been found (1998) in CT only in East Twin Lake and West Twin Lake (Salisbury). Anglers fishing in any of these waters and western Connecticut in general **should use extra care to avoid transporting water, aquatic vegetation, and possibly zebra mussels to new locations.**

This highly invasive mussel can disrupt aquatic ecosystems and is notorious for clogging water intakes and fouling boat hulls and engine cooling water systems.

For more information on zebra mussels and other invasive species, visit

[www.ct.gov/dep/invasivespecies](http://www.ct.gov/dep/invasivespecies).

## TROUT

**Lakes & Ponds** – Anglers are finding some early September trout action, places to try include Crystal Lake (Ellington; target 25-30feet, early morning), East Twin Lake (30-35 feet), Highland Lake (target 30 feet plus), West Hill Pond and Beach Pond.

**Rivers & streams** – The recent rains have improved stream flows in most areas throughout the state (see page 4), with many rivers and streams near their typical fall levels. Water temperatures still remain warm in some areas, it is suggested that anglers are careful to minimize stress to fish that they plan to release. Cooler weather is forecast for next week, which should further improve conditions. Good reports last week from the Farmington river and Housatonic River (early/late in the day). Hatches typically slow now, so anglers should remember terrestrial fly patterns.

**Farmington River** – Flows remain clear and low, currently 64 cfs at Riverton, with the Still River adding an additional 37 cfs. Morning water temperatures are in the low to mid 60's°F, but rising through the day, and as you move downstream, into the low to mid 70's°F. The annual pre-Labor Day stocking of the West Branch Farmington River has not occurred yet as river conditions continue to be evaluated. This stocking will occur when conditions are suitable.

Next week (Tuesday, 9/11, through Thursday, 9/13), DEP expects to conduct its **annual electrofishing survey** of the West Branch Farmington River. Anglers may expect fishing in the West Branch TMA to be slow during and for several days following sampling.

**Hatches/patterns** include Dark Hendrickson (*Ephemerella needhami*, #22-26, morning), *Isonychia bicolor* (#10-14, fast water, evening), Blue Wing Olives (*Drunella* sps. & *Baetis* sps.; #18, 22-24, mid-late afternoon), Light Cahills/Summer (*Stenonema ithaca*, #12-16, early morning), Caddis (tan #16-22, all day; green #22-26, evening, summer pupa #18-20 morning), Midges (#22-32, morning), Black Ants (#12-20, mid day in fast water), Black Beetles (#12-18, mid day), Flying Ants (#18-22, mid day, when windy/humid), Stone Hopper (#8-12, mid day) and Golden Drake (*Anthopotamus distinctus*, #8-14, late evening).

### **Regulations reminder for Farmington River anglers.**

- Anglers are reminded that beginning on September 1, those portions of the Farmington River Trout Management Area upstream from the year-round catch-and-release area to the Goodwin Dam, and downstream from the year-round catch-and-release area to the Route 177 Bridge in Unionville **are catch-and-release only for trout until 6 a.m. on Opening Day, 2013.**

**Housatonic River** – Conditions are improving, as the recent rains increased flows to more typical early September levels, currently 264 cfs at Falls Village and 450 cfs at Gaylordsville. Morning water temperatures are currently in the upper 60's °F (rising through the day), but cooler temperatures are in the forecast for late in the weekend and next week.

**Hatches/patterns** - Successful patterns will include Fall Sulfurs (#16-18), Blue Wing Olive (#18-24, early morning; spinner fall in evening), Leadwing Coachman (#10-12 evening, September is peek month), Cahill (#12-14, evening), and Black caddis (#14-20, early morning & evening). Try Black Ants (#18-22, mid day in fast water), Black Beetles (#14-18, mid day), Stone Hopper (#8-10, mid day). Don't forget streamers (morning & evening), typical patterns include White Woolly Buggers, Muddlers, Micky Finn and Grey or Black Ghosts (#4-10).

**REMINDER TO ANGLERS –**

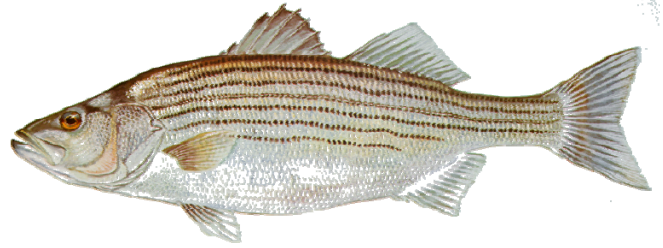


- Maps of all of the state's trout streams and rivers showing the many stocking and access points are now available online at [www.ct.gov/deep/troutstockingmaps](http://www.ct.gov/deep/troutstockingmaps).
- Bathymetry maps of many lakes and ponds are now available online at [www.ct.gov/dep/lib/dep/fishing/general\\_information/lakebathymetrymaps.pdf](http://www.ct.gov/dep/lib/dep/fishing/general_information/lakebathymetrymaps.pdf)

**NOTES & NOTICES:**

- ❖ **WYASSUP LAKE** (impossible to launch) remains drawn down.
- ❖ **GREEN FALLS RESERVOIR** has been drawn down 15 inches to facilitate ongoing dam repairs. The **pond remains open to fishing and car top boating access**, although the swimming area has been closed.
- ❖ **COLEBROOK RIVER LAKE** – Due to low water levels, anglers and boaters should check the USACE Colebrook River Lake website at [www.nae.usace.army.mil/recreati/crl/crlhome.htm](http://www.nae.usace.army.mil/recreati/crl/crlhome.htm) or call the Colebrook River Lake office (860-379-8234) for updated information concerning status of the boat launch.
- ❖ **LAKE MCDONOUGH**- The MDC boat launch facility has closed for the season.
- ❖ **RAINBOW RESERVOIR** is being drawn down approximately 23 feet for maintenance (scheduled to begin this week), making the state boat launch unusable. Work is expected to be completed on or before September 28.
- ❖ **LAKE LILLINONAH** – We have received a number of inquiries from anglers about the status of the Route 133 (Steel Bridge) boat launch. The renovations scheduled for this launch won't occur until sometime in 2013, and the launch remains open for use until the project begins.
- ❖ **CANDLEWOOD LAKE** - We have received a number of inquiries concerning water levels during the months of September and October at Candlewood Lake. Many of these inquiries concern rather incorrect rumors of a deep drawdown occurring in September as First Light Power Resources performs some necessary maintenance including replacement of the penstock. **Anglers and boaters should be aware that a “deep” drawdown is not scheduled to occur this September.** The lake will however be brought down to the minimum “summer” level (as required under the FERC license) on or about September 10, approximately 4 inches lower than the current level of the lake. At this level (“summer” minimum) the launching of trailered boats (especially larger boats) may become difficult at the Lattins Cove state launch but the Squantz Cove state launch remains fully functional.

The Connecticut Department of Energy & Environmental Protection is an Affirmative Action/Equal Opportunity Employer that is committed to requirements of the Americans with Disabilities Act. Any person with a disability who may need information in an alternative format may contact the agency's ADA Coordinator at 860-424-3194, or at [deep.hrmed@ct.gov](mailto:deep.hrmed@ct.gov). Any person with limited proficiency in English, who may need information in another language, may contact the agency's Title VI Coordinator at 860-424-3035, or at [deep.aaooffice@ct.gov](mailto:deep.aaooffice@ct.gov). Any person with a hearing impairment may call the State of Connecticut relay number - 711. Discrimination complaints may be filed with DEEP's Title VI Coordinator. Requests for accommodations must be made at least two weeks prior to any agency hearing, program or event.



## MARINE FISHING REPORT

---

Surface water temperatures in Long Island Sound (LIS) are in the high 60's to low 70's °F. Check out the web sites listed below for more detailed water temperatures and marine boating conditions and see page 5 for some recent water quality information.

<http://www.mysound.uconn.edu/stationstat.html>

[http://marine.rutgers.edu/mrs/sat\\_data/?nothumbs=1](http://marine.rutgers.edu/mrs/sat_data/?nothumbs=1)

<http://www.ndbc.noaa.gov/>

<http://www.wunderground.com/MAR/AN/330.html>

**Special Note: The tautog (blackfish) recreational fishing season is now closed and will reopen again on October 10<sup>th</sup>.**

**BLUEFISH** fishing is about as good as it gets throughout LIS! **SNAPPER BLUEFISH** fishing is near peak fishing in the tidal rivers.

The **STRIPED BASS** night time fishery has picked for those anglers slinging eels. Fishing spot include the usual locations: the reefs off Watch Hill, Ram Island Reef, Thames River, Plum Gut, Pigeon Rip, Little Gull Island, outer Bartlett Reef, Black Point including Niantic Bay, the "humps" south of Hatchett Reef, lower Connecticut River, Long Sand Shoal, Cornfield Point, Southwest Reef including outer SW Reef, Six Mile Reef, the reefs off Madison, Guilford, and Branford, Falkner Island area, upper New Haven Harbor, Charles Island area, lower Housatonic River, buoys 18 and 20 off Stratford Point, Stratford Shoal/Middle Ground, Penfield Reef, the reefs around the Norwalk Islands, and Cable and Anchor Reef.

**SUMMER FLOUNDER** (fluke) fishing is slow at best.

**SCUP** (porgy) fishing is fantastic on any rock pile or structure in LIS!

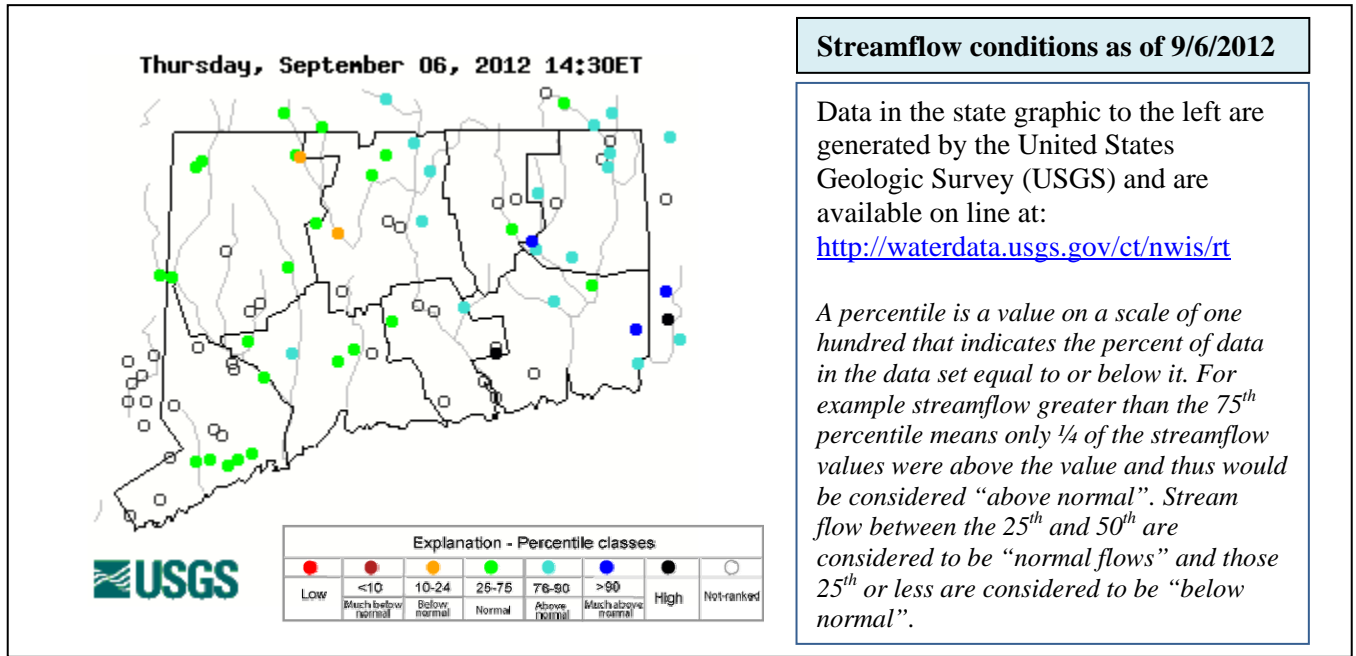
**BLACK SEA BASS** fishing is good to excellent but there are a lot of throwbacks (sublegal fish).

**LITTLE TUNNY** and **ATLANTIC BONITO** are on the move off the Watch Hill area, south shore of Fishers Island, the Race, Sluiceway, Jordan Cove to Millstone Point, Bartlett Reef, and off Black Point.

**BLUE CLAW CRABBING** is at peak along the coast!

---

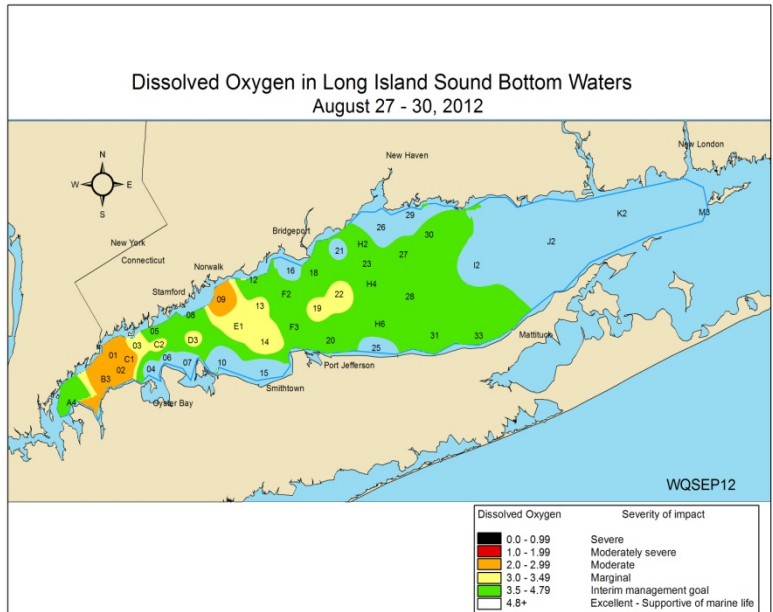
**For Current Connecticut Recreational Fishing Regulations:** Anglers should consult the 2012 Connecticut Anglers Guide which is now available at most Town Clerks Offices, DEEP offices and at tackle stores selling fishing licenses. Current regulations, electronic versions of the Angler's Guide and additional information can all be accessed on the DEEP website at: [www.ct.gov/deep/fishing](http://www.ct.gov/deep/fishing) .



**CT DEEP LONG ISLAND SOUND WATER QUALITY MONITORING:**

[http://www.ct.gov/dep/cwp/view.asp?a=2719&q=325570&depNav\\_GID=1654](http://www.ct.gov/dep/cwp/view.asp?a=2719&q=325570&depNav_GID=1654)

Monitoring of dissolved oxygen levels as well as other water quality parameters are the responsibility of the Long Island Sound Water Quality Monitoring Program within the Bureau of Water Protection and Land Reuse. The amount of oxygen in the water at the bottom of LIS is important for the survival and reproduction of a variety of organism which reside there. Examples include, flounder, fluke, lobster, crab, worms, clams, oysters, and other shellfish. Hypoxia is a condition of low dissolved oxygen concentrations in the waters of Long Island Sound that impacts up to half of the Sound’s waters each summer. The primary cause of hypoxia is nitrogen enrichment that comes from a variety of sources throughout the Long Island Sound watershed, in particular sewage treatment plants, stormwater runoff and atmospheric deposition.



**DEEP WEEKLY Fishing Report**



**Connecticut Department of ENERGY & ENVIRONMENTAL PROTECTION**

79 Elm Street, Hartford, CT 06106  
[www.ct.gov/deep](http://www.ct.gov/deep)

*Striped bass image courtesy Duane Raver/USFWS.*